



## CAMP COST

The camp costs are per family and include all three days of camp.

One Participant: \$150

Two Participants: \$275

Three Participants: \$400

## CAMP TIMES

Adults/Adolescents...9:00am - 3:00pm

Children...10:00am - 3:00pm

## CAMP ENROLLMENT

To enroll, please download the registration form at our website or contact

Cindy Edgerton at:

(517) 353-6426, (517) 543-1981 or

edgerto3@msu.edu

www.msu-cms.org

**Registrations will be accepted until camp reaches capacity.**




## CAMP STAFF

### Jeff Chiambretti

e Nursing Student, University of Michigan

### Laura Duda, MT-BC

e Music Therapist, Children's Hospital of Michigan

### Erin Dunbar, MT-BC

e Music Therapist, Twenty Nine Palms, CA

### Cindy Edgerton, MM, MT-BC

e Camp Director

e Co-Director of MSU CMS Music Therapy Clinical Services

### Jenn Gietzen, MT-BC

e Music Therapist, school contractual and private work, southwestern Michigan

### Jaime Hill, MT-BC

e Music Therapist, owner of Harmony Garden Music Therapy Services, Jackson, Michigan

### Jackie Kuhl, Registered Nurse

e 20+ years experience in home health care

### Julia Purcell, MT-BC

e Co-Director of Music Therapy, Hazelwood Center, Louisville, Kentucky

### Åshild Rødsætre-Thompson, MM, MT-BC

e Music Therapist, MSU CMS Music Therapy Clinical Services

### Roger Smeltekop, MM, MT-BC

e Co-Director of MSU CMS Music Therapy Clinical Services

e Associate Professor of Music Therapy

### Denise Travis, MM, MT-BC

e Music Therapist, MSU CMS Music Therapy Clinical Services

### Judy and Dick Winter

e Camp Co-Chairs

e Proud Parents of Eric 'RicStar' Winter



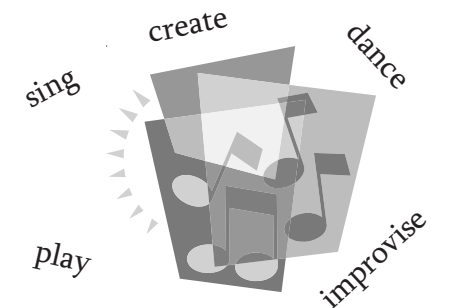
Please join us for the  
6<sup>th</sup> Annual

## Eric 'RicStar' Winter Music Therapy Camp



June 12th-14th, 2008

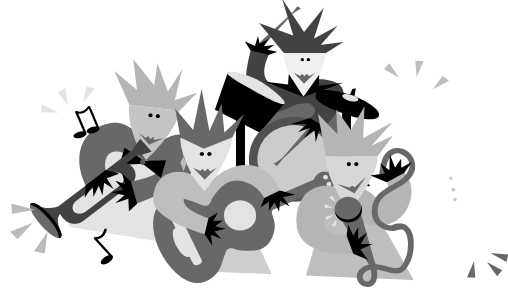
MSU Community Music School  
Timberlane Campus  
East Lansing





## & GROUPS ?

Participants will be divided into three groups: adult, adolescent and child. Opportunities for individual activities and a “down-time” room will be provided for participants needing breaks throughout their days.



e Please bring a bag lunch e